

# QTrend 07



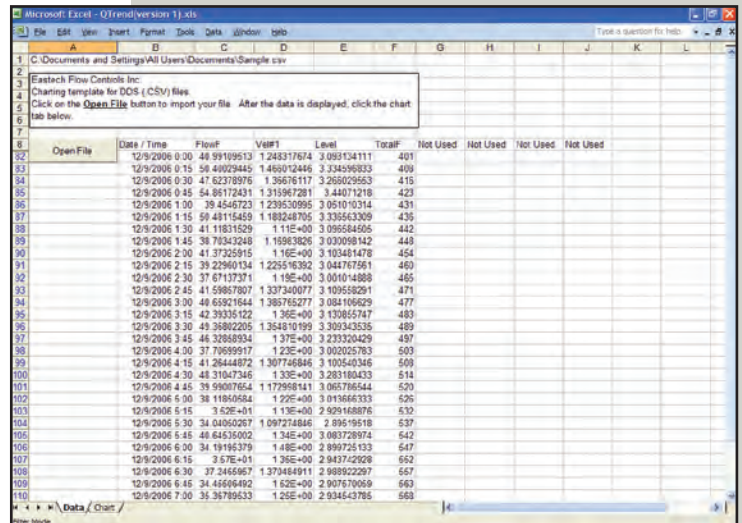
## Flow Data Graphing Package

QTrend 2007 is an Excel Workbook Flow Data Graphing Package specifically designed to interface with every meter offered within the Eastech product line.

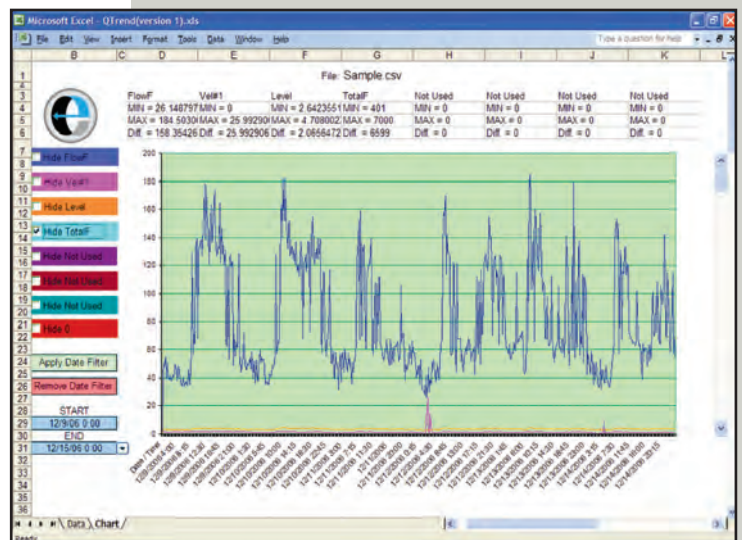
QTrend incorporates specific formulas capable of automating the process of charting and displaying all data contained within the onboard logger of the meter. Each individual Worksheet presents an OPEN FILE button. Upon initiation, the file browser is displayed with a complete list of all CSV files contained within the directory. Choosing a file of interest will automatically import the data from that file into the QTrend Excel Workbook. By simply clicking on the tab labeled CHART, a comprehensive flow evaluation and trend analysis Worksheet is displayed.

All graphed data is presented in a color-coded format that coincides with a complete set of corresponding Data Description Keys prominently displayed on the left perimeter of the Worksheet. For specific analysis, associated data may be temporarily hidden from view by a simple click on the appropriate Data Description Key. Maximum and minimum values for every measurement category are updated and then displayed within each graphical window.

QTrend 2007 is compatible with MicroSoft Excel 2003 and later versions, and is capable of presenting for analysis a maximum of 32,000 data points.



Eastech CSV File



Flow and Level (Total Flow Hidden)

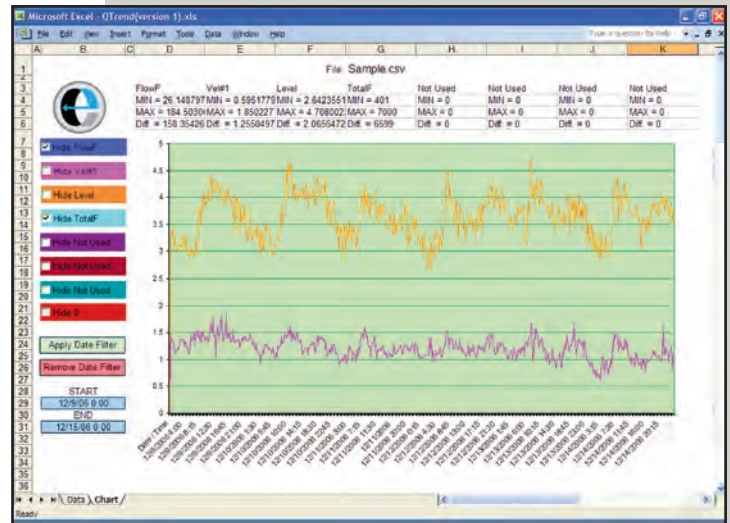


eastech

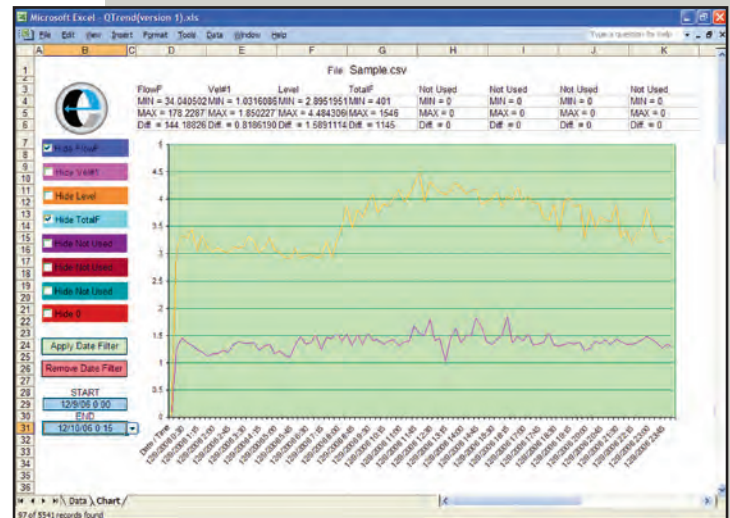
# QTrend 07

QTrend is an Excel Workbook that includes various formulas and macro required to automate the process of charting and displaying pertinent flow data downloaded from any Eastech flow meter. The Data Worksheet contains an OPEN FILE button. By simply clicking on the OPEN FILE button, a file browser is displayed listing every CSV file contained within the active directory, with the latest viewed directory appearing by default. Choosing a file of interest will automatically result in that specific file being imported into the Excel Workbook. While displaying the Data Worksheet, a tabular list of the CSV file is visible for numerical review. By clicking on the Chart tab, the Chart Worksheet is immediately brought forward.

A Data Key, displayed in colors identical to those utilized for graphical information, can be found on the far left side of the Worksheet. A check box, present within each Data Key, allows for graphical data to be hidden from view. Un-checking the box will re-display the information. Two dropdown lists are located below the color keys. By inserting a START and END date/time, and then clicking on the APPLY DATE FILTER button, data will only appear for the indicated date/time period. Minimum, maximum and differential values for all charted data are prominently displayed on the top edge of every chart window. Charts may be printed or saved as new XLS files or simply be used for displaying non-altered CSV files. Returning to the OPEN FILE button allows for the loading of new data files.



*Level and Velocity (Both Flow and Total Flow Hidden)*



*Level and Velocity (Both Flow and Total Flow Hidden)*

